

# A STUDENT GOVERNANCE MODEL ALIGNED TO H.E ACT OF 1997 (Amended 2013)

→ COUNCIL, SENATE, INSTITUTIONAL FORUM AND UNIVERSITY COMMITTEES

**Election Commission**  
 → Independent Structure of Student Governance  
 → Conducts and Monitors Elections  
 → Has Sub-Committees

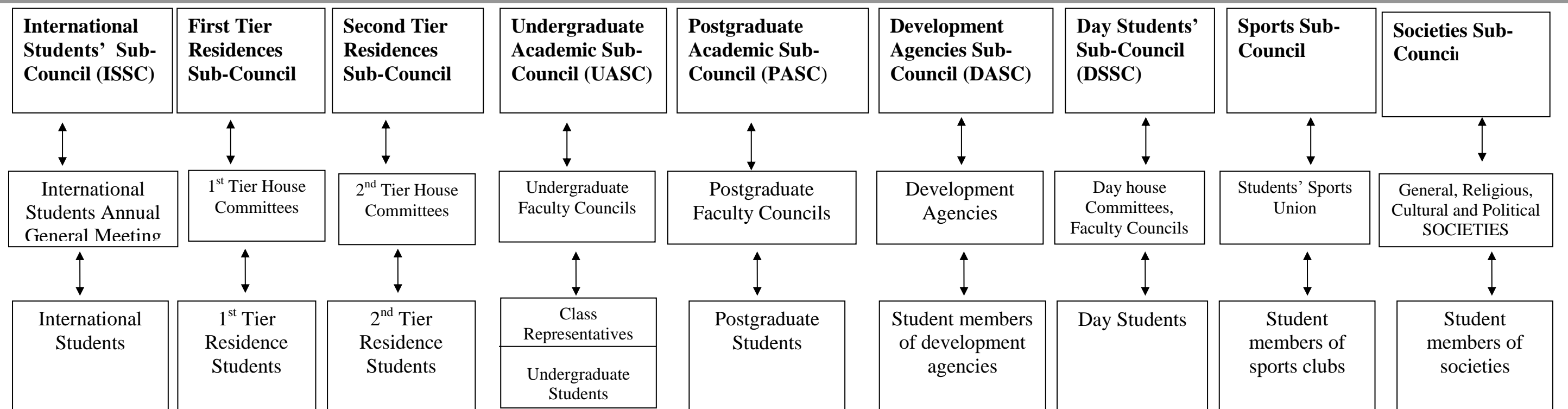
**SRC Standing Committees/ Forums/ Sub-Committees (SCs)**  
 → Presidency  
 → Secretariat  
 → Finance  
 → Student Leaders Transformation Forum  
 → Constitutional Committee  
 → Vacation Committee  
 → International Students' Forum  
 → Media and Communications SC  
 → Health, Safety and Environment SC  
 → Entertainment and Fundraising SC  
 → Labour and Services SC

**SRC**  
 → Statutory Body (H.E ACT)  
 → Democratically elected campus wide popular vote  
 → Highest Decision Making Structure in Student Governance  
 → Oversees all Student Resources

**SRC Executive Committee**  
 8 Members of the SRC  
 Delegated powers from the SRC

**Student Assembly**  
 → Debating Forum for Student Leaders  
 → Recommends Policy positions to the SRC  
 → SRC Members, Residences' Councils, Academic Councils (Undergraduate and Postgraduate), Day Students' Sub-Council, Sports Sub-Council, Societies Sub-Council and Development Agencies Sub-Council, International Students' Sub-Council

## SRC Sub-Councils



# Student Body